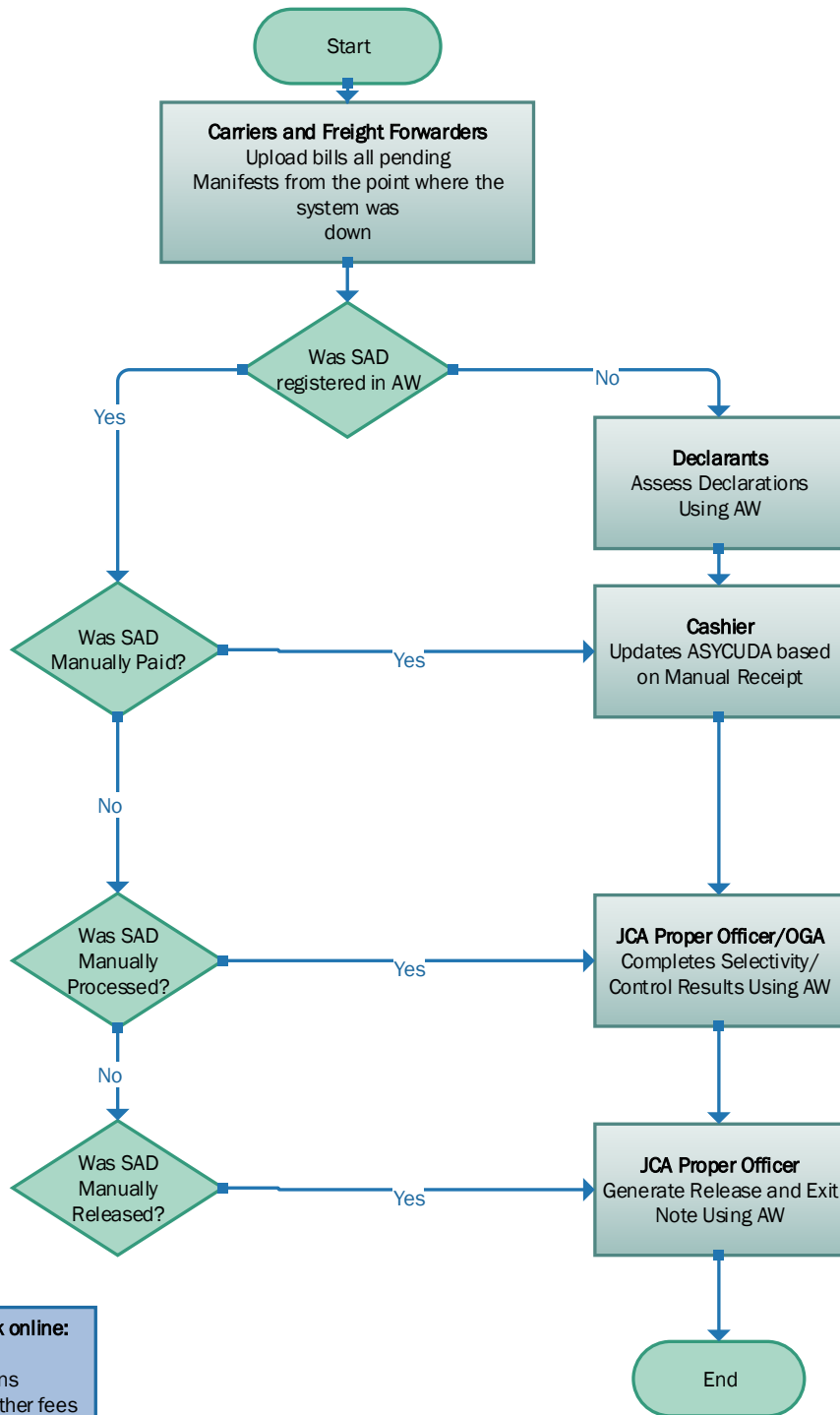


Commercial Cargo Clearance

Recovery from Manual Process (when AW is back online)

CIO or designate declares "System back online" - All Manual Processes to cease



- All AW operations to be back online:**
- Submission of Manifest
 - Submission of Declarations
 - Payment of entries and other fees
 - Offence Module
 - Exemption Module

N.B. Declarations done subsequent to a Manual entry must use the JMD equivalent for the amount assessed while AW was offline