



JAMAICA CUSTOMS AGENCY

Mobile Application – Duty Estimator

Information Services Unit

The Duty Estimator

The Duty Estimator provides a faster way to ascertain an estimation of the payable duties and taxes following the supply of the Currency, Item Cost, Shipping, and package for selected commodities/items. This feature allows the user to search by using a part or all the 10 Digits Tariff Code or the description of a given commodity (figure 1.1).

- Select the Currency from the dropdown menu or enter the desired currency using the search option from the dropdown menu.
- Input the necessary data such as the Shipping Cost, Insurance and Transport Mode.
- Tap/Select “new item” the first commodity entered if there are multiple items. (Tariff code/description, total item cost, number of items and package types.) If there is another item, then select “Add item”. See figure 1.1.
- If the shipment is deemed commercial, select the check box “**This is a commercial item**”.

The screenshot displays the 'Duty Estimator' app interface. At the top, the time is 9:41 and there are signal, Wi-Fi, and battery icons. The title 'Duty Estimator' is centered. Below the title is a 'Currency' dropdown menu with 'Select' and a downward arrow. Two input fields are shown: 'Shipping Cost' with '\$1000' and 'Insurance Amount' with '\$1000'. A 'Transport Mode' dropdown menu also has 'Select' and a downward arrow. A blue button labeled 'New Item' is positioned to the right of the Transport Mode dropdown. Below this is a 'Tariff Code / Description' input field with the placeholder text 'Enter description or code'. Two more input fields are shown: 'Total Item Cost' with '\$10000' and 'Number of Items' with '10'. A 'Package Type' dropdown menu has 'Select' and a downward arrow. A checkbox labeled 'This is a commercial item' is located below the Package Type dropdown. At the bottom, there are two dark blue buttons: 'Add Item' with a plus sign icon and 'Estimate My Duty' with a circular arrow icon.

New item: First commodity, if their needs be to add another commodity, select “add item” button.

Check this box only if the commodity is commercial. “This is a commercial item”.

Select “Add Item”, to add another commodity.

Figure 1.0 Duty Estimator

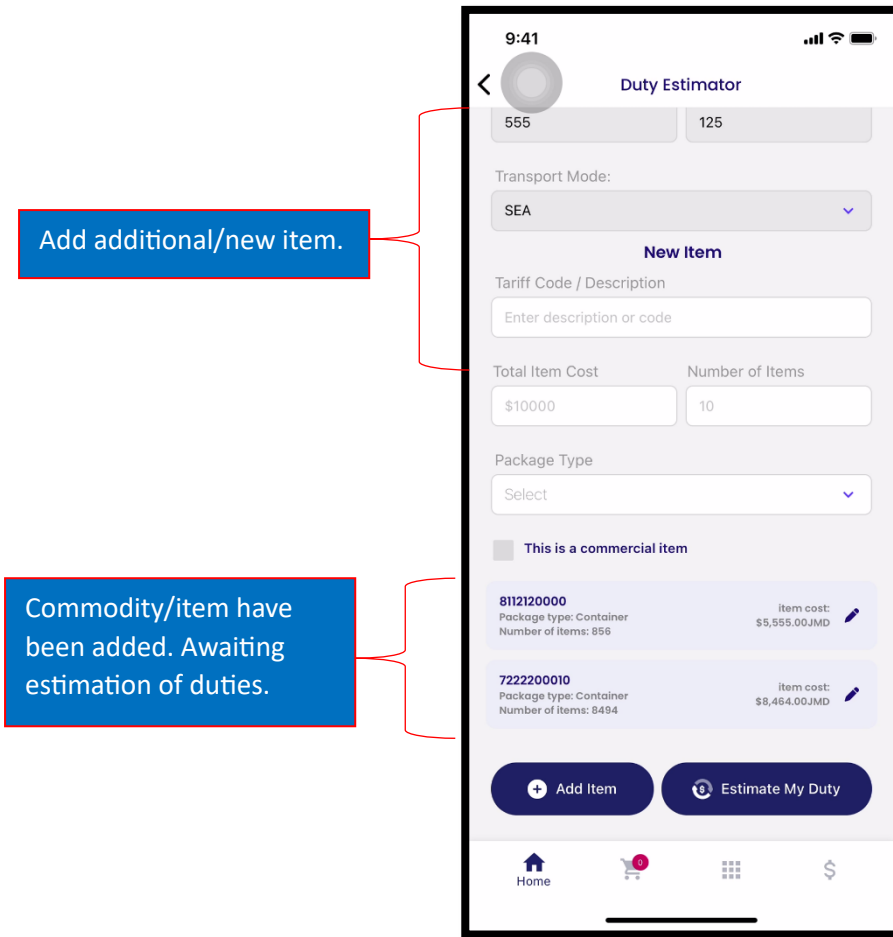


Figure 1.1 Duty Estimator

The user can click **Estimate My Duty** (figure 1.2) once all mandatory fields are populated. The system will calculate all duties and taxes (figure 1.3). If the user wants, they can add another item (figure 3.2), then select “Estimate my Duty” and all the duties will be calculated and displayed separately.

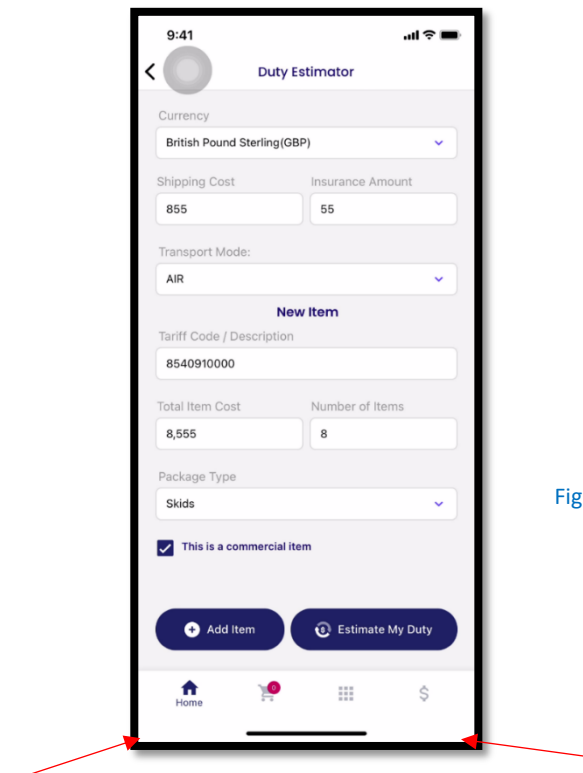
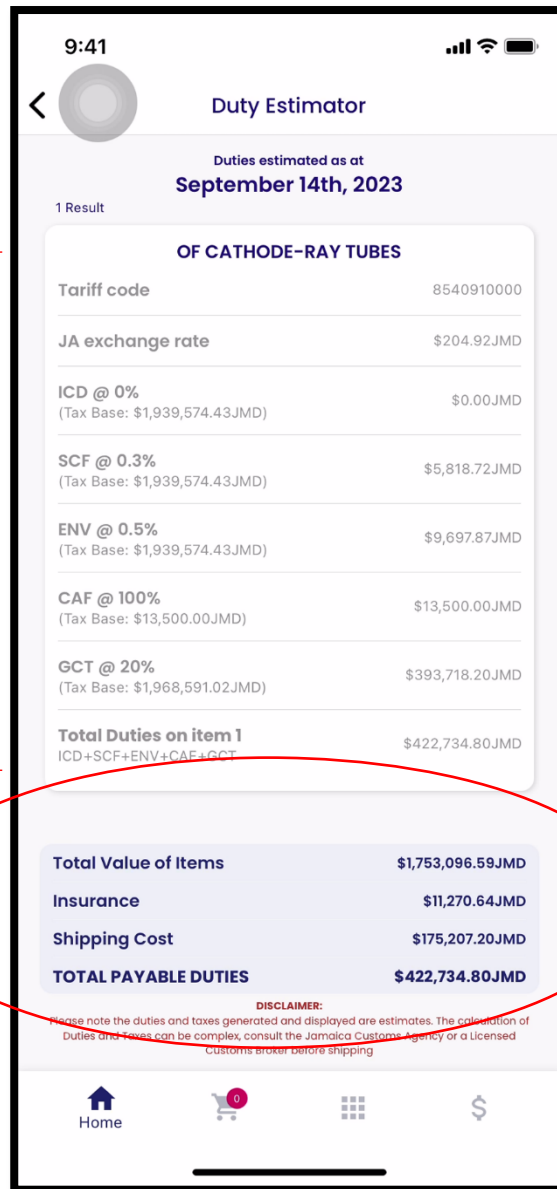


Figure 1.2 Duty Estimator



Duties and taxes
calculated

Figure 1.3 – Duties estimated.

N.B.

To view the duties estimated for multiple items, the users will have scroll down to view the next estimated values for the item.